

Sustainable Construction



NL Trade Mission
Sustainable Construction to Denmark
28 - 31 October 2024



Netherlands



Netherlands

As the Dutch Ambassador to Denmark, I am proud to highlight our nation's commitment to circular construction and the broader circular economy. The transition to circularity is essential for tackling climate change and fostering sustainable development. In the Netherlands, we envision a future where resources are kept in use for as long as possible, minimising waste and maximising the value of materials. The Dutch government has set ambitious goals to become fully circular by 2050, with significant milestones by 2030.

Circular construction focuses on designing buildings and infrastructure that can be easily adapted, reused, or recycled. This approach not only reduces environmental impact but also promotes innovation and economic growth. By collaborating with industry leaders, researchers, and policymakers, we aim to establish an ecosystem that support sustainable practices in construction.

Denmark has long been a pioneer in sustainability, and together, our countries can through best practices contribute to this global challenge. We can share knowledge and technologies to live up to our own sustainable ambitions and inspire others to set and deliver on ambitious goals as well.

Let us join forces to create resilient, sustainable communities and inspire a global shift towards a circular economy. Together, we can build a future where resources are valued and environmental integrity is upheld.



Nienke Trooster

Ambassador of the Kingdom of the Netherlands
in Denmark

Knowledge and Innovation are typically developed in good corporation and are pleased to continue our mutual interest in this field! The Netherlands is actively working towards making the built environment more sustainable by focusing on durability, climate adaptation, and circularity. Knowledge and innovation play a crucial role, with public-private partnerships driving new solutions and the integration of sustainability in urban development projects. The current flagship programme 'Future Proof Built Environment' that runs 5 year has raised EUR 200 mln to achieve significant progress before 2030.

In the Netherlands we aim to reduce the environmental impact of construction and urban planning through innovative practices and ambitious national goals. Durability is addressed by designing buildings that have a longer lifespan and are energy-efficient. Innovations such as sustainable materials, energy-neutral homes, and smart building technologies contribute to this effort. By 2050, all buildings shall be free of natural gas.

Climate adaptation focuses on creating environments that can withstand changing weather patterns, such as floods, heatwaves, and heavy rainfall. The Netherlands have traditional worked on flood prevention but do to more extreme weather scenarios new technologies are implemented. National and local governments have introduced more severe water management strategies, green roofs, and public spaces designed to absorb excess water, helping cities cope with floods, droughts, and heat stress.

Circularity is the third key focus in the built environment. The aim is to transition from a linear to a circular economy. This involves increasing biobased construction materials and reducing waste by reusing materials in construction, designing modular buildings, and ensuring that resources can be recycled at the end of a building's lifecycle. The Netherlands has set a goal to have a fully circular economy by 2050, with interim targets in 2030.



William van Niekerk
Managing Director TKI Bouw en Techniek

Table of content

Delegation 5

Boon Edam Global Export	6
Energy Ports B.V.	7
Green Road Equipment	8
GreenMax Group	9
Hollandia Infra B.V.	10
Janson Bridging	11
Koninklijke Van Wijhe Verf B.V.	12
Leadax Sustainable & Circular Waterproofing	13
Madaster	14
NPSP	15
Pluss Advanced Technologies B.V.	16
QbiQ Wall Systems	17
Riho Climate Systems B.V.	18
TNO	19

Team overview 20

Mission organisation	21
----------------------	----



Delegation

Boon Edam Global Export



Campbell Frost
Export Sales Manager
campbell.frost@boonedam.com
T +31 6 11 90 80 63
www.boonedam.com



The Challenge

Boon Edam provides solutions as an Entry Expert in pedestrian traffic and throughput via premium automatic revolving door products in airports, office buildings, airports, convention centres etc. Our solutions offer the benefits of a complete separation between the internal and external environments, putting significantly less strain on buildings HVAC systems and resulting in energy savings every month.

Further, our Entry Expertise spans to access control solutions that Deter, Detect and Prevent potential intruders from reaching secure areas. (Global Partnerships such as Amazon, Google, Microsoft)

Our Solution

Delivering premium products and in-line expert service to our end-client. Solving and improving foot traffic through green solutions, providing an entrance that has 8x less air exchange than a standard swing or sliding door. Providing monthly energy savings that result in a ROI within

a few years. Keeping secure and non-secure areas separate through our premium security solutions, both practical and aesthetic. In line with European norms and safety standards/ certifications.

Looking for:

- Security Integrators.
- Architect partners.
- General contractors.
- Façade Specialists.
- Service partners.
- Green Building innovators and implementors.

The above are important to make connections with, and relations with our brand and existing distributor – this is imperative to continuing our growth and market presence in Denmark.



Energy Ports B.V.



Wouter de Roos
CEO & Founder
wouter@energyports.com
T +31 6 296 089 21
www.energyports.com



The Challenge

Energy Ports delivers the most elegant, scalable, integrated solar carport system in the C&I market. It also serves other ESG goals such as water management. Transforming single land-use area in urbanized areas to 'multi land-land use' areas with purpose. Guaranteed waterproofing opens up many new values under the canopy system. With all certifications, it meets all standards and regulations, ensuring safest use in public spaces, - construction, and -maintenance.

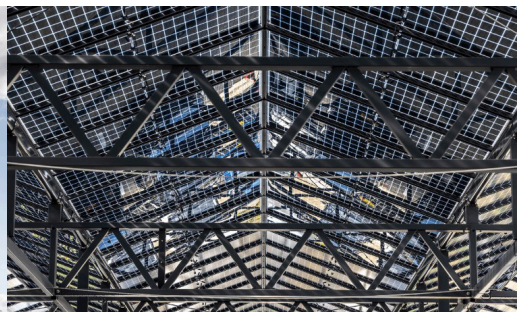
Our Solution

Energy Ports solar carports supplies the highest Wattlepeak per m2, is the safest in the market and with our eastathatical finish it will boost the image of our ESG driven C&I customers. Due to the watertightness; the carport is to be considered as a large scale glass roof with the oportunity for the enduser to deploy many other activities to create value. The combination with the generated solar energy, (fast)charging and storage, the business case for the investor is

excellent with a payback period of 6-7 years. Our solar carport system makes the operations of the end-user grid resilient and fits with the Paris Agreement/EU green deal laws being implemented the coming years.

Looking for:

Energy Ports Holding B.V. looks for partners to establish a Joint Venture in specific markets in the Nordics. The profile of the partner should bring strong trackrecord in sustainable construction /building industry with a big network of ESG C&I customers. The Joint Venture will be based on equity. Energy Ports will supply extended DC solar knowledge, Marketing & Sales support, assets like our own panel and gutter system, project deskengineering. The JV partner must build a sales network, deploy local building capacity and engineering for local certification & permit requirements. Details later to be discussed. Shareholders Energy Ports Holding B.V.: www.boalgroup.com / www.flexibellgroup.com / Wouter de Roos



Green Road Equipment



Wilfred Sleijffers
CEO
directie@geba.nl
T +31 6 461 81 261
www.greenroadequipment.nl



The Challenge

More and more road construction projects in the Netherlands are being halted or postponed due to high nitrogen and CO2 emissions that are harmful to the environment. In order to be able to carry out these works, the use of emission-free road construction equipment is a requirement.

Because the global demand for emission-free construction equipment is still far too small, manufacturers are very reluctant to develop and produce emission-free machines. For this reason, a mismatch has arisen between the increasing amount of emission-free road works to be carried out on the one hand and the equipment available for this on the other.

Our Solution

Due to the increasing demand from its customers (road construction companies in the Netherlands) for emission-free equipment, parent company GEBA founded Green Road Equipment (GRE) in 2020 with the aim of gradually converting its own rental machinery (rollers and asphalt pavers) from diesel. - to electrically powered 'zero-emission' equipment. Rollers and asphalt pavers of different types and factory brands are completely dismantled at GRE and rebuilt with all E-components and new software. Machines that consume a relatively large amount of energy are equipped with universal battery replacement packages that can easily be exchanged on the construction site. The less

energy-consuming machines have a fixed battery pack that can operate for at least 12 hours. The new machines are provided with a new CE quality mark, new machine type name and year of manufacture. By converting old diesel machines, not only enormous raw material savings are being achieved (circularity), but also the opportunity to carry out postponed construction works CO2 and nitrogen-free in vulnerable areas like within the municipal boundaries or nature reserves.

Looking for:

Recruiting customers: Contractors interested in our electrical machines and want to close purchase contracts.

Investors: Companies/investors who want to invest in growth and expansion of our activities in the Nordics.

Partners: Connect with potential foreign partners such as wholesalers in the electrical, sustainable or road construction teams/companies who can take on technical service and after sales-support and sales activities in the Nordics.



GreenMax Group



Elco van Uden
Managing Director
elco.uden@greenmax.eu
T +31 6 270 008 44
www.greenmaxgroup.eu



The Challenge

In the past decades, the pressure on urban square metres has increased more and more. Every metre in the urban environment is intensively used by above- and underground infrastructure, traffic, and events. Creating a smart balance between green, grey, and blue is a growing challenge and is becoming increasingly important.

Our Solution

Creating an optimal planting environment is essential for urban trees to reach maturity. The TreeParker® soil cell system provides urban trees with the space and tools they need. It allows for unrestricted root growth and offers infiltration opportunities for the right soil composition. Additionally, TreeParker® is equipped with an AirMax & AquaMax aeration and irrigation system and supports stormwater management by facilitating water infiltration and storage, thus reducing surface runoff. TRG root guidance panels ensure

that roots do not cause root heave and root ball anchoring provides the trees with stability. TreeParker® gives urban trees the chance to thrive and grow old healthily. By connecting green, blue, and grey infrastructures, we create future-proof cities and landscapes to live in.

Looking for:

- Connect with potential (foreign) distributors for the Norwegian and Swedish market.
- Networking with partners as municipalities, architects and landscape architects infrastructural building companies.



Hollandia Infra B.V.



Diederik van Rijn
Managing Director
d.vanrijn@hollandiainfra.nl
T +31 6 3 418 153 4
www.hollandiainfra.nl



Arie van der Hoek
Sales Manager
a.vanderhoek@hollandiainfra.nl
T +31 6 3 418 153 4

The Challenge

Rising sea and river levels require adaptation and enhanced protection. Hollandia engineers, fabricates and installs barriers, gates and bridges to protect and connect people.

Our Solution

Hollandia engineers work on both eye catching and sustainable constructions and mechanics. Delivering maintenance free/low maintenance structures. Recognized as the leading engineering and construction company for movable infrastructure in Netherlands, United Kingdom and Ireland. Partnerships with architects and civil engineers resulting in beautiful bridges and barriers like Lille Langebro in Copenhagen. Hollandia offers life extension programs, maintenance and repairs on existing bridges, barriers and sluices.

Looking for:

- Connect with potential (Scandinavian) partners such as architects, consultants and civil engineering companies to discuss cooperation options.
- Networking with architects, building companies, government officials and regulators, economic development agencies etc to discuss future cooperation.
- Development partners in water barriers, sluices and bridges.



Janson Bridging



David Sala
General Manager Nordics
david.sala@jansonbridging.com
T : +31 6 8685 6931
www.jansonbridging.com



JANSONBRIDGING
COME ACROSS

The Challenge

Many regions globally face increasing challenges from natural disasters, climate change, infrastructure maintenance backlogs, and rapid urbanization. These issues strain existing infrastructure and hinder mobility, particularly in emergency situations or high-traffic areas in or near construction sites.

In emergency situations or high-traffic areas, the need for quickly deployable, modular, and sustainable infrastructure is critical. As a turnkey supplier, Janson Bridging provides temporary modular solutions for rent, helping to reduce CO2 emissions and prevent industrial waste.

Our Solution

Janson Bridging Europe is the expert in modular temporary bridges and pontoons, addressing infrastructural challenges with quickly deployable solutions for rent. Our pedestrian, traffic, highway, and railway bridge systems are suitable for both temporary and long-term use.

As a turnkey supplier, we focus on sustainability by offering reusable modular elements that help reduce CO2 emissions and avoid industrial waste. With over 50 years of experience and a rental fleet of 30,000 tons, we've successfully completed more than 7,000 projects worldwide.



Our approved modular designs are available directly from our rental stock, allowing us to respond rapidly and effectively to emergencies or complex high-traffic situations. Operating from local branches in the Netherlands, UK, France, Germany, Belgium, Italy, Poland, Norway, Sweden, and soon Denmark, we ensure reliable support for public mobility and our clients / authorities. Discover how Janson Bridging can bridge your challenges today!

Looking for:

Janson Bridging indicated the Nordic region as focus growth market for further expansion. Therefore, we are aiming for a greater product/service awareness, since the use of renting temporary modular bridges isn't commonly known yet!

- Connect and establish a robust B2B network for our temporary modular bridge and pontoon solutions in infrastructure projects across the Nordics.
- Engage main contractors and engineering firms to share our modular design philosophy and demonstrate the benefits of modularity and circularity through lectures, meetings, and collaborative projects.
- Inspire road, rail, and local authorities to adopt temporary modular solutions that enhance safe and sustainable mobility, especially during infrastructure projects.

Koninklijke Van Wijhe Verf B.V.



Edwin van Broekhuizen
Sales Director Decorative Coatings
evanbroekhuizen@vanwijheverf.com
T : +31 6 465 403 45
www.vanwijheverf.nl/en



The Challenge

Urgent environmental and climate problems require all of us to work together on sustainable solutions. We aim for sustainable development in the whole chain with special attention for nature and biodiversity. Sustainable initiatives are among all sectors.

Van Wijhe Verf develops its paint products with respect for people and the environment. We look beyond pure profitability. Sustainable selected raw materials, durability, superior hiding power, long lasting gloss retention are important for long-term performance and less CO2 footprint impact. Sustainable products always without any loss on quality.

Our Solution

Develop and innovate the most sustainable paint. As a B Corp and family company we look for solutions for the next generations. Our sustainable Ralston paints and colorants products are used worldwide. A complete range of innovative versatile, professional quality paints, primers and stains for optimum protection of the painted surface. Available in any conceivable colour from a database of more than 120.000 colours.

Since 1916 we have a long list of innovations in the industry > First chemical B Corp company in Chemical industry 2016 > Patented two base system 1996 > First biobased paint in 2012 > Post Consumer Recycled Buckets > CO2 footprint per product visible via QR on can > 99% Titanium dioxide free Concept paint without microplastics Flower Power > More historical milestones.

Looking for:

For us, this initiative will be successful if we get a better idea of how the industry is going to implement the huge ambitions around sustainability. Getting in touch with companies that see business opportunities in processing, selling or prescribing our professional biobased products.



Leadax Sustainable & Circular Waterproofing



Abdoel Achalhi
Global Sales Director
achalhi@leadax.com
T : +31 6 225 017 53
www.leadax.com



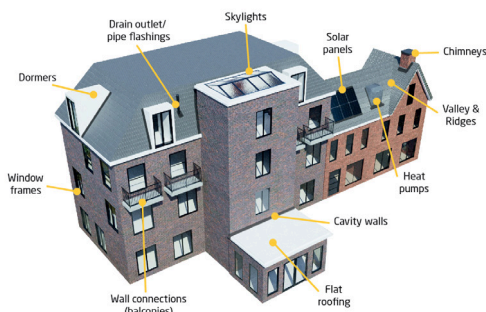
The Challenge

Leadax Circular & Sustainable Waterproofing addresses the global challenge of reducing waste and carbon emissions in the construction industry. Traditional roofing and waterproofing materials often rely on non-recyclable, fossil-based resources. Leadax provides a sustainable alternative by producing high-performance and circular waterproofing products made from recycled materials. Our waterproofing solutions are made from recycled PVB, a type of plastic used in safety glass laminates. Annually, tons of this plastic are either incinerated or buried in Europe due to the lack of alternative applications - until now!

Our Solution

The product range includes a variety of waterproofing solutions for flat and pitched roofs, contributing to a circular economy and significantly reducing the environmental impact of construction projects worldwide.

Leadax Flashing: Revolutionary waterproofing products for waterproofing exterior roofs and facades. Our flashing materials replacing metal details and traditional lead and other sealing products.



Applications Leadax sustainable waterproofing solutions

1. Leadax Murphy: just 1.8 mm thick. Applicable as flashing in systems for ventilation, heat pump, air conditioning and solar applications.
2. Leadax Original is the new lead replacement. It weighs just 3.85 kg/m², which is very light.
3. Leadax Easy FA: a self-adhesive lead replacement.

Leadax Roov: is the circular flat roofing membrane made from recycled PVB. This smart and innovative flat roofing material has a significant lower CO₂ impact compared to traditional roofing. The membranes are reflective off-white. This keeps the indoor temperature low, but increases the output of solar panels on the roof.

Looking for:

The construction industry is continuously evolving with changes in regulations and requirements from clients. New initiatives in the construction sector increasingly favor low-carbon solutions, “healthy materials” and phase out heavy toxic materials. Material and product selection is therefore becoming more critical, with the principles of sustainability, circularity, and health at the forefront. With Leadax, you are prepared for the future!

We are looking for:

Distributors of building materials, prefab & modular builders, builders merchants, installers and companies who providing integrated solutions for ventilation, heat pumps and flue gas systems where Flashing solutions are needed on the roof.



Leadax circular product range

Madaster



Pablo van den Bosch
Board Member
pablo.vandenbosch@madaster.com
T +31 6 523 223 25
www.madaster.com



Frederique van Erven
International Expansion Manager
frederique.vanerven@madaster.com
T +31 6 83 258 118

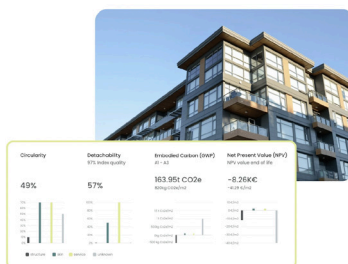


The Challenge

Compliance and costs are challenges for every stakeholder in the construction sector. We partner across the ecosystem to drive solutions that meet all conditions of the built environment. By giving each material an identity, we can design with purpose, and accurately assess financial and environmental impact.

Our Solution

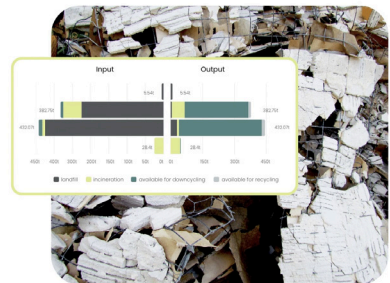
Madaster is the online registry for materials and products. In Madaster, data are recorded on all materials and products that are incorporated in a real estate or infrastructure object, such as buildings and bridges. Registering every component provides insight, for example, into the degree to which an object can be dismantled, embodied carbon, or the toxicity of the materials and products used. It also enables determining whether materials and products can be reused after disassembly. Building in such a circular way means that we are drastically reducing the amount of waste and CO2 emissions and are taking better care of our planet.



Looking for:

Madaster is looking for leading real estate or infrastructure companies, and construction product manufacturers that want to create a showcase project together.

Madaster wants to connect with potential partner, such as asset owners, developers, designers, contractors and product manufacturers.





Willem Böttger
Director Innovation
willem.bottger@npssp.nl
T +31 6 523 450 20
www.nabasco.nl / www.npssp.nl



The Challenge

The Built Environment consumes over 50% of all materials produced, driving a significant carbon footprint and reliance on scarce Critical Raw Materials. With rising demands for sustainable solutions from architects, investors, and builders, Nabasco Products & NPSP address this challenge by offering innovative, bio-based alternatives that meet strict sustainability and building standards, reducing environmental impact while maintaining performance and quality.

Our Solution

Nabasco Products creates sustainable, high-quality bio-based façade panels, traffic signs, and electric enclosures with innovative design options. Our circular, waste-based composites are a strong alternative to materials like aluminum, tropical hardwood, and glass fiber composites.

Through our R&D company, NPSP BV, we continuously advance bio-based composites. Using a patented process, we produce custom freeform designs that minimize material use, lower costs, and maintain top quality. Our products feature excellent fire resistance and long-lasting durability, ensuring safety in every application.

Looking for:

Nabasco Products and NPSP are looking for:

- Market insights into the potential of our products and our Nabasco composite material in the Nordic countries.
- Strategic partners in distributing Nabasco Facades
- Distribution Partners of Nabasco Road Signs.
- Local production partner(s)
- Launching customers and partners to achieve compliance with local norms and certifications.
- Potential strategic partners/investors



Pluss Advanced Technologies B.V.



Eddy Borst
Sales Manager
eddy@plussat.eu
T +31 6 431 487 82
www.plussat.eu

PLUSS[®] | TECHNOLOGY FOR
A BETTER WORLD

The Challenge

To create awareness about PCM and its benefits to be used as thermal storage and addition as thermal mass to buildings to make those more sustainable and save energy, also increase comfort of living. Our products are 100% recyclable and if no longer needed we take them back to re-use.

Throughout EMEA we want to be the nr1 PCM supplier in buildings.

Our Solution

We provide PCM materials suited for buildings and HVAC solutions to reduce energy consumption and enable thermal storage for a better comfort of living.

We try to make the world a better place.

Looking for:

- Creating awareness B2B.
- Connect with Architects, building companies, Government officials, economic development agencies.
- Looking for development partners and distributors of our products such as building companies, ceiling companies.



QbiQ Wall Systems



Marianne van der Sande
Brand Manager
marianne@qbiq.nl
T +31 88 50 10 543
www.qbiq.nl



Wall Systems

The Challenge

QbiQ Wall Systems produces glazed partitions in The Netherlands. The principles for our design are minimalism, transparency and circularity. All partitions are Cradle to Cradle Certified® Silver, demountable and fit for reuse, refurbishing and/or recycling. Our expertise is available for each project to create the best spatial experience in every workenvironment.

Our Solution

Despite the high quality of our products, we keep our prices competitive. We endeavour to offer our customers excellent value for money. Punctual delivery is also essential in our industry. Therefore, we have optimised our processes to ensure that we can deliver our products quickly and efficiently.

Looking for:

QbiQ is looking for distributors in the Nordics. Independent strong all-round entrepreneurs that understand communicating with all parties involved in the construction industry. Persons that are able to discuss the esthetics and technical specs of partitioning, have notion on how to adress sustainability and most important: see the projects being realized with our partition concepts integrated. And have their network established at both architects and construction companies.



Riho Climate Systems B.V.



Jurgen Riethorst
Owner/Director
jurgen@rihoclimatesystems.nl
T +31 6 5159 1330
www.rihoclimatesystems.nl



The Challenge

Integrating a sustainable heating system into a new or existing building requires increasingly specific knowledge. How can you design and install an energy-efficient heating system that provides a comfortable climate and complies with current laws and regulations? How do you control and communicate with the heat source? Where are the opportunities to save energy and use it as efficiently as possible?

Our Solution

We, Riho Climate Systems relieve our clients with the complexities of heating and cooling of a building. We calculate, design, produce, draw and install complete sustainable heating systems. Because our products are designed and produced in-house, we can respond precisely to the customer's requirements. We offer a range of standard products but can deliver everything project specific and customized. Where other competitors stop, we offer the solution. Whether it is a newly built residential tower, remodeling a home, renovating monumental buildings or realizing ice rinks. We have the appropriate knowledge, experience and products for every challenge.

Looking for:

- Connecting with partners that can use our product or service.
- Sharing knowledge of sustainable building in the Nordics, the building regulations in general contracting within the building sector of the Nordics.
- Getting feedback and insight how to enter the Danish market with a co-partner or as a subcontractor.
- Getting to know installers to share knowledge about the difference between installations and the way of building in the Netherlands and Denmark.





Huub Keizers
Business Manager Circular Construction &
International Collaboration
huub.keizers@tno.nl
T +31 6 239 001 98
www.tno.nl



Wouter Moorlag
Manager Circular & Industrial Construction
wouter.moorlag@tno.nl
T +31 6 239 001 98



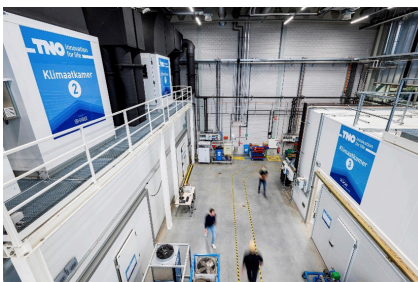
The Challenge

The Netherlands Organisation for Applied Scientific Research (TNO) is an independent research organisation. The mission of TNO is generating innovative solutions with demonstrable impact for a safe, healthy and sustainable society and increasing the earning capacity of companies. Since 1932 it is our job to ask the right questions and to give the right answers. Using state-of-the-art laboratories, digital twins, test and (pilot scale) production facilities, we can handle the most complex questions.

Our Solution

Construction is one of the most important transition domains towards a CO₂-neutral and circular economy by 2050. To accelerate this transition, we are working as an innovation partner for governments and companies in the construction sector nationally and internationally:

- New (bio-based) building materials that are safe, sustainable and affordable
- Large-scale reuse of waste streams in new constructions with resource-based engineering



- Industrialization, prefabrication and automation
- Energy storage and generation, e.g. in façades of buildings and advanced heatpumps
- Renovation concepts for existing housing, monuments and (social) real estate

Looking for:

- Connect with potential (foreign) partners such as companies and research institutes who work on sustainable, biobased and/or circular construction products, digitalization and assessment methods.
- Networking with knowledge partners as universities, architects, building companies, government officials and regulators and economic development agencies working on a more sustainable built environment.
- Development partners, working on sustainable construction products, digital solutions (Digital Twinning, openBIM, Energy Modelling, Embodied carbon,...), safelife prediction & circular re-use and certification of secondlife construction products.



Team overview

Mission organisation

This mission is part of a long-term effort by the Dutch Embassy in Stockholm, InnovationQuarter, the Regional Business Development Team for the Baltics and Nordics, the Netherlands Enterprise Agency (RVO) and Amsterdam Trade&Innovate to support Dutch companies in the sustainable building sector with their market expansion to the Scandinavian market.

The regional business development team Nordics and Baltics pro-actively facilitates and supports trade between the Nordics, Baltics and the Netherlands, together with the Netherlands embassies and other stakeholders. The team helps innovative and sustainable SMEs, startups and scale-ups with a unique selling proposition, to expand or start in the Nordics. Growing and knowing the local network in the areas of circular economy (e.g. building & construction, textile) and green transition (wind, hydrogen, battery) is the main focus.

Netherlands Enterprise Agency



Daphne Roelands
Business Development Coach
Nordics
daphne.roelands@rvo.nl

Embassy of the Kingdom of the Netherlands in Sweden



Els Berkers
Business Development Officer
Nordics
els.berkers@minbuza.nl

Innovation Quarter



InnovationQuarter is the regional economic development agency for the Province of Zuid-Holland, also known as the greater Rotterdam – The Hague area. We are a partner of the Dutch Ministry of Economic Affairs and stimulate economic growth. We invest, innovate, and internationalise as we manage several investment funds, co-create innovation projects, support Dutch businesses with expanding to foreign markets and support foreign businesses with settling in our region.



Anne de Vries
Senior Project Manager Internationalisation – Energy & Circularity
+31 6 225 46 065
anne.devries@innovationquarter.nl

Amsterdam Trade & Innovate



Amsterdam Trade & Innovate supports innovative and creative entrepreneurs with their international ambitions. In order to solve urban challenges in the field of mobility, food, circular textiles and sustainable building, we need the solutions, innovative strength and entrepreneurship of companies. We set up various activities for entrepreneurs, including training programmes on internationalisation and trade missions.



Nancy Zikken
Trade developer Sustainable Built Environment
+31 6 289 464 89
n.zikken@amsterdam.nl

Mission organisation

Netherlands



Embassy of the Kingdom of
the Netherlands in Denmark

Jurrien van der Horst
Regional Business Developer Nordics & Baltics
jurrien-vander.horst@minbuza.nl



psps business abroad

Peter Sanders
Managing Director
psanders@psps-ba.nl



Building Network ApS (Matchmaker)

Mickey Lund
Managing Director and business developer
ml@buildingnetwork.dk



Thomas van den Boogerd
Project Manager
vdboogerd@psps-ba.nl



Zoë Breevaart Orúe
Project Assistant
zoe@psps-ba.nl



Netherlands

This mission is powered by:

Netherlands Enterprise Agency (RVO)

Pr. Beatrixlaan 2
2595 AL The Hague
The Netherlands

This mission is executed by:

psps business abroad

Koninginnegracht 47
2514 AE, The Hague
The Netherlands



Netherlands